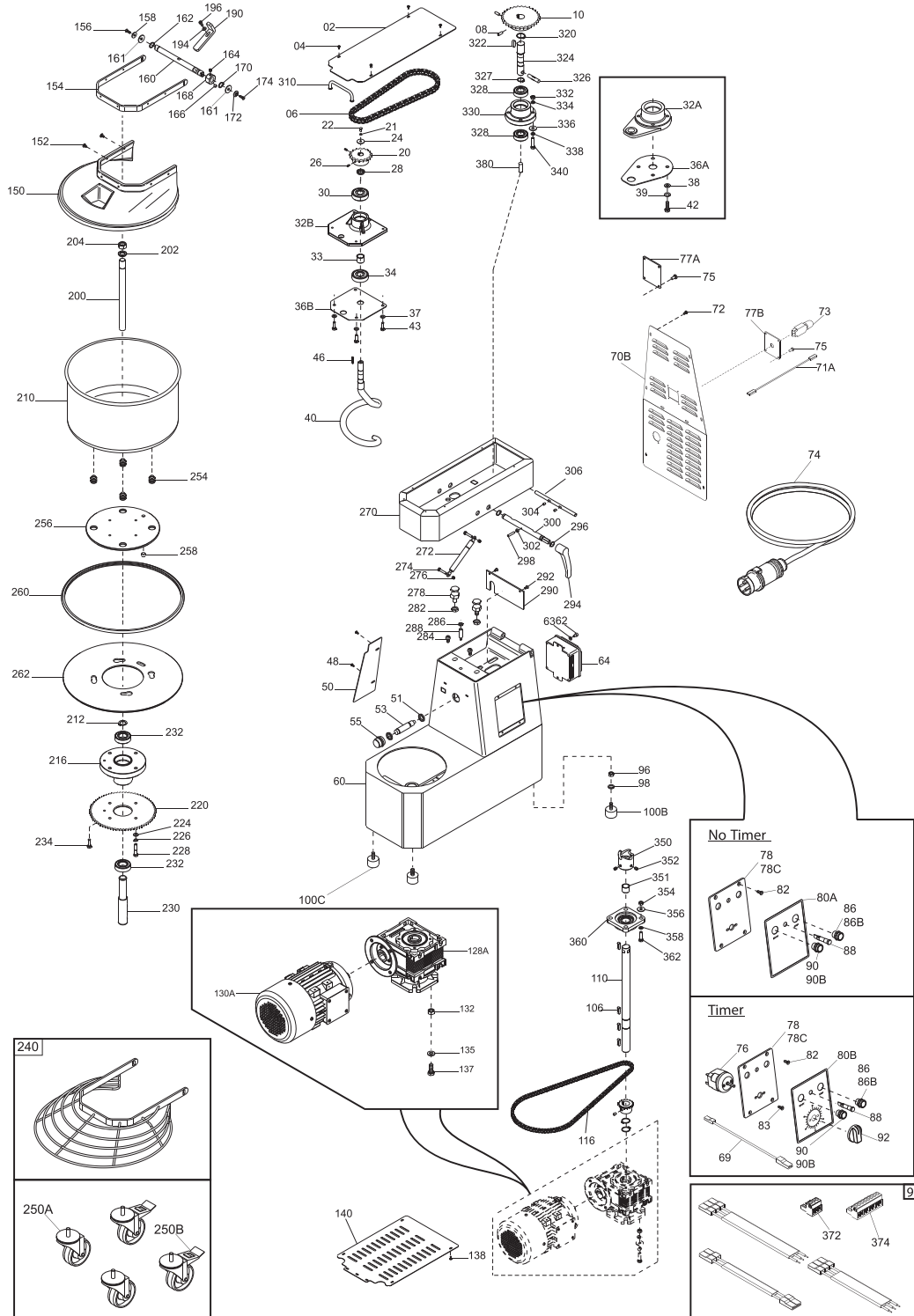


Parts Breakdown

Model MX-IT-0030-R 47088



Parts Breakdown

Model MX-IT-0030-R 47088

Item No.	Description	Position	Item No.	Description	Position	Item No.	Description	Position
AH116	Upper Casing ETL VRN for 47088	02	AH115	Welded Frame ETL TA 30 Vern. for 47088	60	AH041	Pinion Z20 3/8x7/32" D25 for 47088	120
69217	Screw Poeliers M4x8 for 47088	04, 48, 72, 83, 138	62660	Washer F Wide DIN 9021 D6x18 for 47088	61	AH044	Reducer NMRV 063 B14 1/30 FA 90 for 47088	128A, 130A
AH038	Chain 1/2x5/6" for 47088	06	AH019	Screw TCEI DIN 912 M6x10 for 47088	62	62664	Screw TE DIN 933 M10x20 T.F. for 47088	137
AH031	Screw DIN 916 M6x20 NE for 47088	08	AH066	Electric Box TGM2SIR MN for 47088	64	AH061	Underdeck Protection for 47088	140
AG959	Pinion Z30 1/2x5/16" for 47088	10	AH117	Rear Carter Y16 ETL TA 30 VRN for 47088	70B	AH065	ETL Thermoformed Protection for 47088	150
AH027	Nut ES. DIN 934 M10 for 47088	12, 97, 132, 354	AG952	Power Cable UL Thermal Protection for 47088	71A	69218	Screw Poeliers M5x8 for 47088	152
62645	Flat Washer DIN 125 D 10 for 47088	15, 135, 338, 358	AH046	Thermal Protection T11-211 11A MN for 47088	73	AH063	Lid Frame for 47088	154
AH016	Washer F.Larga DIN 9021 D10x30 for 47088	16	AH112	Power Cable Comp. 220/60 UL for 47088	74	AH013	Flathead CSK Screw DIN 7991 M5x14 for 47088	156
AH025	Screw TE DIN 933 M10x35 T.F. for 47088	18, 362	AG991	Supp. Plate Prot. Term. MN for 47088	77B	AH055	Lid Shaft for 47088	160
AH040	Pinion Z17 1/2x5/16" D20 for 47088	20	AH060	Plate. Controls Panel for 47088	78	AG996	Plastic Washer 16x25x1 for 47088	161
AH004	Grower Washer UNI 1751 D8 for 47088	21, 23, 226, 336	AH011	Screw TC+ DIN 7985 M4x8 for 47088	79	AH006	Stop Rings DIN 471 D 15E for 47088	162
62663	X.Screw DIN 933 M8x20 for 47088	22	AG971	Face Plate. Controls Panel for 47088	80A	18960	Magnet for SO Anodized/GF/FR for 47088	166
AH070	Washer F Wide DIN 9021 D8x32 ZN for 47088	24	AH012	Screw TSPEI Din 7991 M5x8 for 47088	82, 292	AG997	Cam TA for 47088	168
AH069	Screw without Head DIN 916 M5x16 NE for 47088	26	AH014	Washer F.Larga Din 9021 D4x12 for 47088	84, 273	AG977	Washer for 47088	172
AH050	Spacer for 47088	28	AG949	Black Push Button N.O. for 47088	86	AH026	Hex.Nut DIN 934 M4 for 47088	177, 302
AH034	Ball Bearing 6204 2RS NTN for 47088	30, 34	AG947	Stainless Steel Off Button Resin-Coated Y12 UL for 47088	86B	AH000	Washer Flat DIN 125 D.4 for 47088	179, 194
AH037	Spiral Cast Iron Supp Y12 LAV. for 47088	32B	AG951	Unified Light UL 24 V for 47088	88	69215	Nut DIN 934 M3 for 47088	182
AH052	Dist.Int.Cusc.Supp.Spiral for 47088	33	AG950	White Push Button N.O. for 47088	90	AH017	Screw TCEI DIN 912 M4x12 for 47088	184, 196, 271
AH049	Spiral Support Plate Y12 for 47088	36B	AG948	Stainless Steel On Button with Light Y12 Resin UL for 47088	90B	AG989	Corner Plate for 47088	190
62644	Flat Washer DIN 125 D8 for 47088	37, 334, 356	AH120	Internal Panel ETL 30 TA for 47088	94	AH054	Shaft for 47088	200
AH048	Spiral Y17 for 47088	40	AH113	Internal Wiring 220/60 UL TA for 47088	99	AH005	Grower Washer UNI 1751 D 18 for 47088	201
AH022	Screw TE DIN 933 M8x25 T.F. for 47088	43, 234	AH007	Retaining Rings DIN 471 D 25E for 47088	104, 212, 320	AH033	Flat Washer DIN 125 D 18 Zinc for 47088	202
AH067	Feathers DIN 6885 / A6x6x25 for 47088	46	AH009	Feathers DIN 6885 / A8x7x25 for 47088	106, 322, 355	AH028	Nut ES. DIN 934 M18 for 47088	204
AH059	Tank Protection ETL Vern. for 47088	50	AH114	Transmission Shaft T1 30-40 for 47088	110	AH051	Bowl 400x260 for 47088	210
AH076	Proximity Sensor TA for 47088	53, 51	AH039	Chain 3/8x7/32" for 47088	116	AG955	Bowl Holder for 47088	216
AH096	Proximity Support for 47088	55	AH030	Grub Screw DIN 916 M6x8 NE for 47088	118, 164, 304, 353	AH110	Chain Ring Z85 3/8x7/32" for 47088	220

Parts Breakdown

Model MX-IT-0030-R 47088

Item No.	Description	Position	Item No.	Description	Position	Item No.	Description	Position
AH023	Screw TE DIN 933 M8x35 T.F. for 47088	228	62643	Flat Washer DIN 125 D6 for 47088	275	AH075	Handle TA for 47088	310
AG981	Shaft. Bowl Support for 47088	230	AH106	Hex.Nut DIN 934 M6 for 47088	276	AC008	Screw DIN 916 M8x10 NE for 47088	321, 352
AH032	Screw without Head DIN 916 M8x16 NE for 47088	231	AH093	Hexagonal Screw for 47088	278	AH089	Transmission Shaft for 47088	324
AG945	Bearing 6205 2RS ORS for 47088	232, 328	AH099	Washer DIN 125 D12 for 47088	280	AH103	Pin Inox DIN 7 D10x50 for 47088	326
AG998	Wheel ETL CMT1-3PBB for 47088	250A	AH109	Self-Lock Nut ES DIN982 M12 Low for 47088	282	AH102	C-Clip.Retaining DIN 471 D.20 EXT for 47088	327
AG999	ETL Wheel C / Brake CMT1-3PPB for 47088	250B	AH097	Supp. Cover Sensor M10 TA for 47088	283	AH071	Head Holder for 47088	330
AH087	Bowl Insert. TA for 47088	254	AH094	Pin TA for 47088	284	AH092	Transmission Joint TA for 47088	350
AH085	Fixed Disc TA for 47088	256	AH077	Magnetic Sensor Head UL TA for 47088	288	AH074	Distance Transm. Joint 20-30 TA for 47088	351
AH086	Pin for 47088	258	AH119	Protection Micro ETL TA 30 VRN for 47088	290	AG958	Flange Support for 47088	360
AH124	Rubber Protection for 47088	260	AH095	Release Lever. TA for 47088	294	AG969	3-Pole Connector for 47088	372
AH121	Rotating Disc 30 TA for 47088	262	AH101	Retaining Rings DIN 471 D 16E for 47088	296	AG970	8 Poles Connector for 47088	374
AH118	Welded Head ETL TA 30 VERN. for 47088	270	AH104	Grub Screw DIN 913 M4x35 CE for 47088	298	AH107	Screw without Head DIN 916 M8x12 NE for 47088	380
AH111	Gas Spring 084093 TA for 47088	272	AH122	Release Shaft TA 30 for 47088	300			
AH105	Screw TE DIN 933 M6x30 T.F. for 47088	274	AH123	Hinge Pin 30 TA for 47088	306			